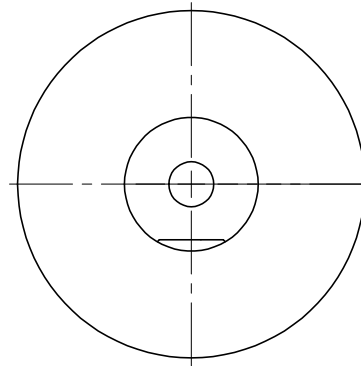
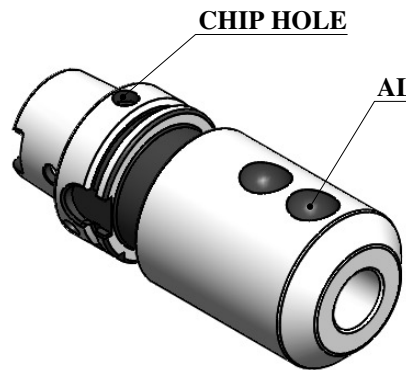
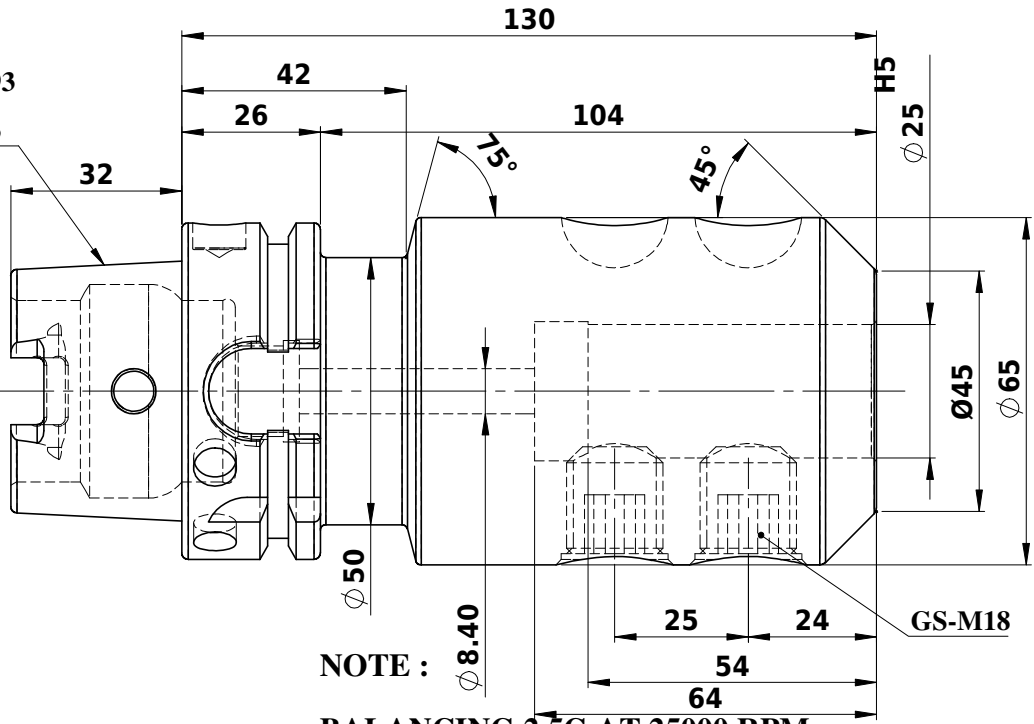


Rev.No.	Ch.Let	Alterations	Date	Sign.	Appd.

All Dimensions are in MM



DIN69893  
FORMA  
HKA63



NOTE :  
BALANCING 2.5G AT 25000 RPM

WEIGHT : 2.74 kg

**LABEL :**  
2002270.2505  
WELDON-AUFNAHME  
WELDON HOLDER DIN69893  
HSK63A WE 25 mm x 130 mm  
G2,5 / 25000 U/MIN

**MARKING :** DIN 69893 A HSK63A WE25H130  
G2.5 25000 U/MIN

µm	0.012	0.025	0.05	0.1	0.2	0.4	0.8	1.6	3.2	6.3	12.5	25	50	
GRADES	N1	N2	N3	N4	N5	N6	N7	N8	N9	N10	N11	N12		
SYMBOLS	▽▽▽	▽▽	▽	▽	▽	▽	▽	▽	▽	▽	▽	▽	~	
TOLERANCE	MATERIALS:													
FREE DIMENSIONS	2017 NAME DATE													
TOLERANCE	16MnCr5 DRAWN KFK 18/08													
Dimns.	Dia	Length	CHECKED RWL 18/08										2002270.2505	
0.5 to 3	±0.05	±0.10	APPROVED											
3 to 6	±0.10	±0.15	SCALE : NTS QTY. :											
6 to 30	±0.15	±0.20	PART NAME:											
30 to 120	±0.20	±0.25	HSKA63EM25130WW											
120 to 500	±0.30	±0.50	DRAWING No.										REV.	
												FWA063H-EMH25130		00

ITEM NO.	PART NUMBER	DESCRIPTION	QTY.
1	FWA063H-EMH25130	HSKA63EM25130WW	1
2	GS-M18X20	GRUB SCREW	2