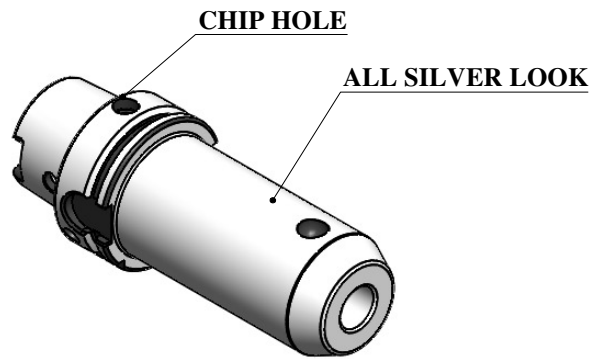
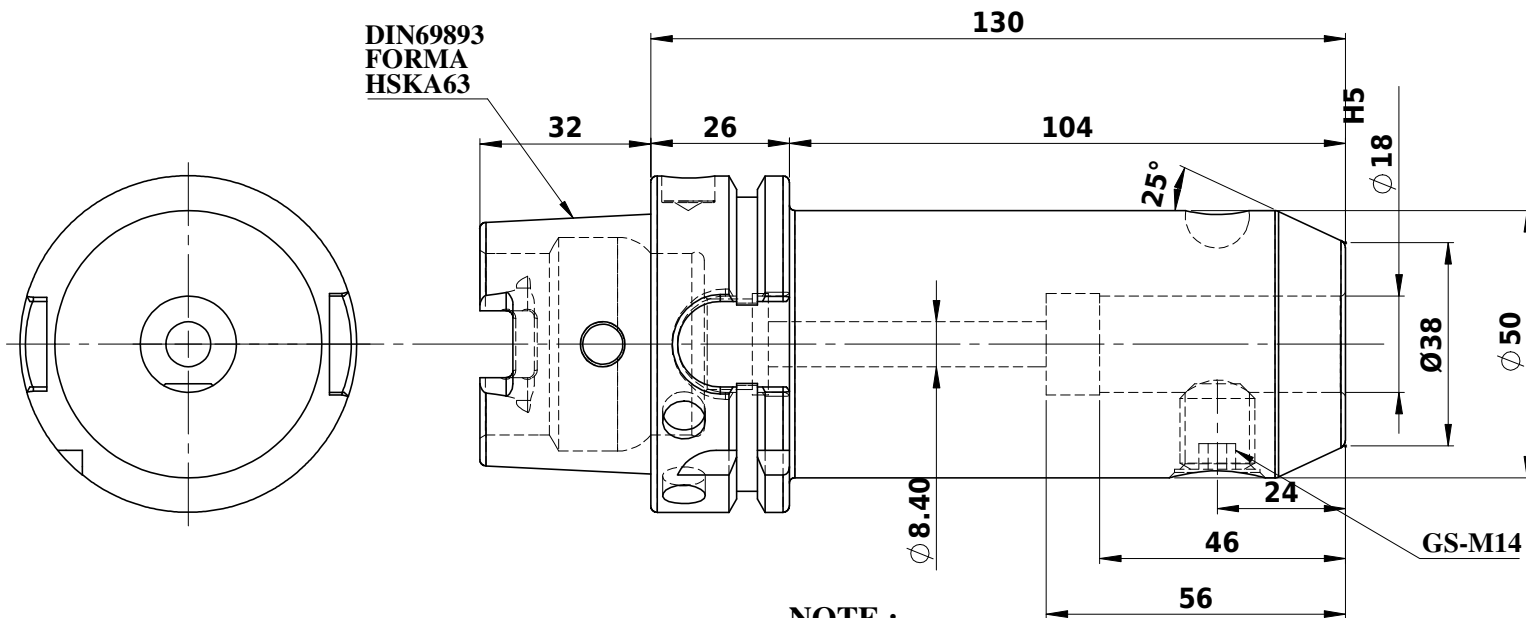


Rev.No.	Ch.Let	Alterations	Date	Sign.	Appd.

All Dimensions are in MM



DIN69893  
FORMA  
HKA63



**LABEL :**  
**2002270.1805**  
**WELDON-**  
**AUFNAHME WELDON**  
**HOLDER DIN69893**  
**HSK63A WE 18 mm x**  
**130 mm G2,5 / 25000 U/**  
**MIN**

**MARKING : DIN 69893 A HSK63A WE18H130**  
**G2.5 25000 U/MIN**

**NOTE :**  
**BALANCING 2.5G AT 25000 RPM**

**WEIGHT : 2.05 kg**

	µ m	0.012	0.025	0.05	0.1	0.2	0.4	0.8	1.6	3.2	6.3	12.5	25	50			
GRADES		N1	N2	N3	N4	N5	N6	N7	N8	N9	N10	N11	N12				
SYMBOLS		▽▽▽	▽▽	▽	▽	▽	▽	▽	▽	▽	▽	▽	▽	~			
TOLERANCE	MATERIALS:	2017	NAME	DATE	<b>2002270.1805</b>												
FREE DIMENSIONS	16MnCr5	DRAWN	KFK	18/08													
TOLERANCE		CHECKED	RVL	18/08													
		APPROVED															
Dimns.	Dia	Length	SCALE : NTS		QTY. :		PART NAME:								DRAWING No.		REV.
0.5 to 3	±0.05	±0.10					<b>HSKA63EM18130WW</b>								<b>FWA063H-EMH18130</b>		00
3 to 6	±0.10	±0.15															
6 to 30	±0.15	±0.20															
30 to 120	±0.20	±0.25															
120 to 500	±0.30	±0.50															

ITEM NO.	PART NUMBER	DESCRIPTION	QTY.
1	FWA063H-EMH18130	HSKA63EM18130WW	1
2	GS-M14X16	GRUB SCREW	1