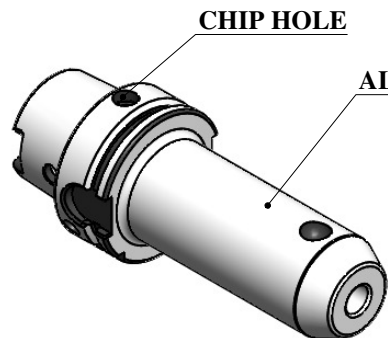
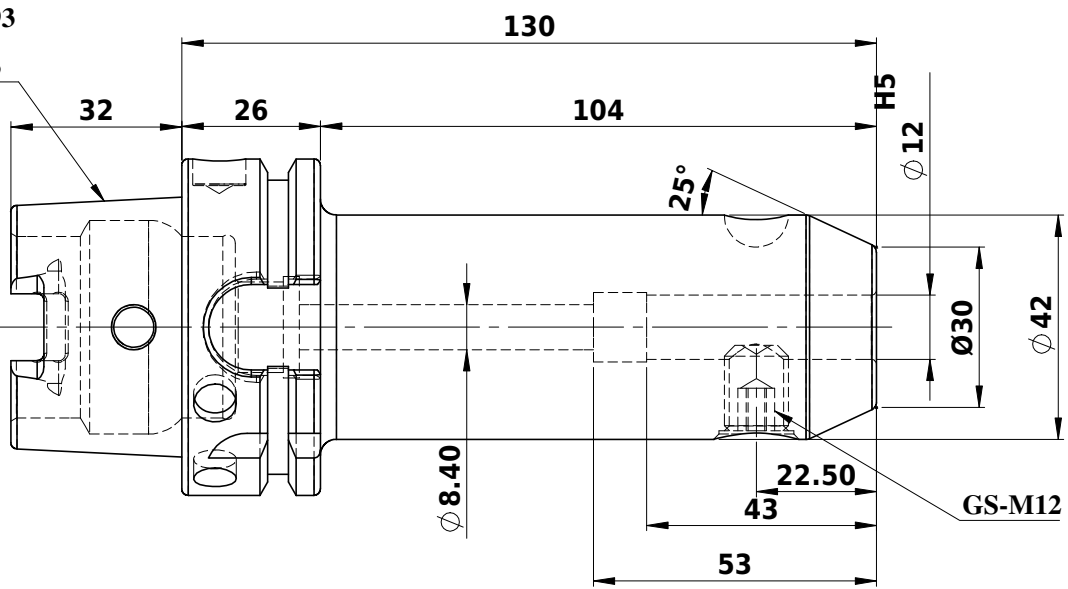
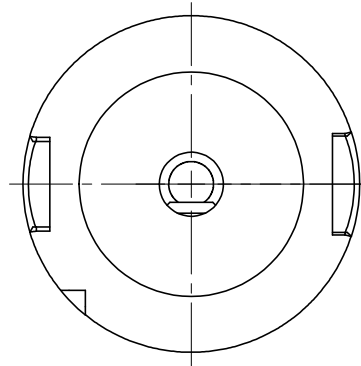


Rev.No.	Ch.Let	Alterations	Date	Sign.	Appd.

All Dimensions are in MM



DIN69893  
FORMA  
HKA63



**LABEL :**  
**2002270.1205**  
**WELDON-**  
**AUFNAHME WELDON**  
**HOLDER DIN69893**  
**HSK63A WE 12 mm x**  
**130 mm G2,5 / 25000 U/**  
**MIN**  
**MARKING : DIN 69893 A HSK63A WE12H130**  
**G2.5 25000 U/MIN**

**NOTE :**  
**BALANCING 2.5G AT 25000 RPM**  
**WEIGHT : 1.77 kg**

ITEM NO.	PART NUMBER	DESCRIPTION	QTY.
1	FWA063H-EMH12130	HSKA63EM12130WW	1
2	GS-M12X16	GRUB SCREW	1

µm	0.012	0.025	0.05	0.1	0.2	0.4	0.8	1.6	3.2	6.3	12.5	25	50
GRADES	N1	N2	N3	N4	N5	N6	N7	N8	N9	N10	N11	N12	
SYMBOLS	▽▽▽			▽▽▽			▽▽			▽			~
TOLERANCE	MATERIALS:			2017	NAME	DATE	<b>2002270.1205</b>						
FREE DIMENSIONS	16MnCr5			DRAWN	KFK	18/08							
TOLERANCE	Dimns.			CHECKED	RVL	18/08							
	Dia			APPROVED									
	Length			SCALE : NTS QTY. :			PART NAME:						
0.5 to 3	±0.05	±0.10	HSKA63EM12130WW			DRAWING No.							
3 to 6	±0.10	±0.15	FWA063H-EMH12130			REV.							
6 to 30	±0.15	±0.20	GS-M12X16			00							
30 to 120	±0.20	±0.25											
120 to 500	±0.30	±0.50											