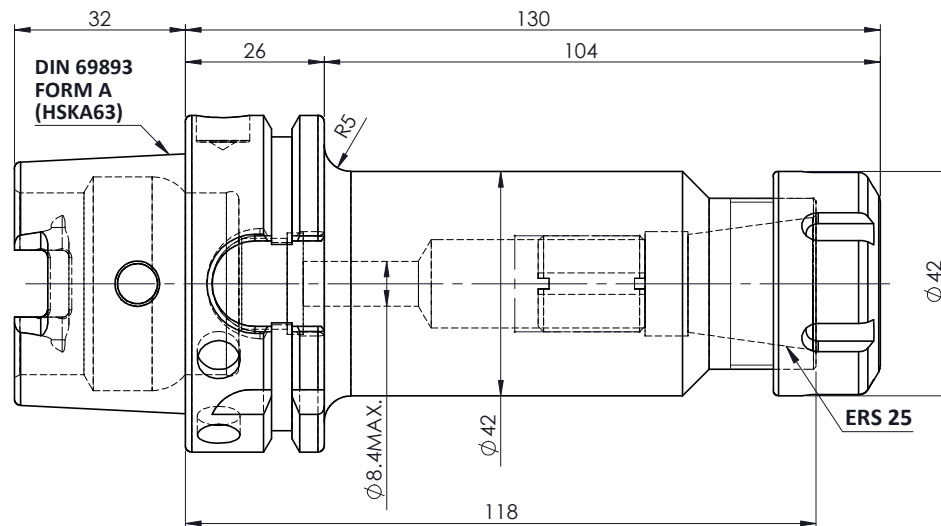
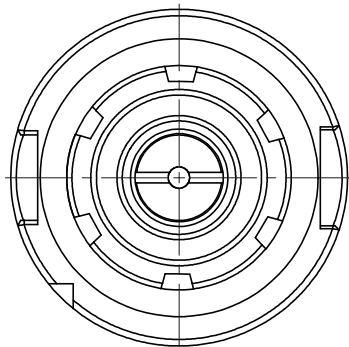


All Dimensions are in MM

5	6	7	8
Rev.No.	Ch.Let	Alterations	Date

For Customer Approval



LABEL :

**2002269.0505
 SPANZANGENAUFNAHME
 ER COLLET CHUCK HOLDER
 DIN69893 HSK63A
 ER 25 x 130mm
 G2,5 / 25000 U/MIN**

**MARKING : DIN 69893 A HSK63A CCH ER25 H130
 G2.5 25000 U/MIN**

Notes	
Balancing Value	G2.5@25000RPM
Approx Weight	1.4Kg

	μ m	0.012	0.025	0.05	0.1	0.2	0.4	0.8	1.6	3.2	6.3	12.5	25	50
GRADES		N1	N2	N3	N4	N5	N6	N7	N8	N9	N10	N11	N12	
SYMBOLS		▽▽▽	▽▽	▽	▽	▽	▽	▽	▽	▽	▽	▽	▽	~

TOLERANCE	MATERIALS:	2024	NAME	DATE
FREE DIMENSIONS	16MnCr5	DRAWN	SVR	19/07
TOLERANCE		CHECKED	RVL	19/07
Dimns.		APPROVED		
Dia		SCALE : NTS	QTY. :	
Length		PART NAME:		DRAWING No.
0.5 to 3	± 0.05	HSKA63CCHER25130WW		2002269.0505
3 to 6	± 0.10			FWA063H-ERS25130
6 to 30	± 0.15			REV.
30 to 120	± 0.20			00
120 to 500	± 0.30			

ITEM NO.	PART NUMBER	DESCRIPTION	QTY.
3	SCWM18X1.5	STOPPER SCREW	1
2	FTNUTER25	COLLET NUT	1
1	FWA063H-ERS25130	HSKA63CCHER25130WW	1