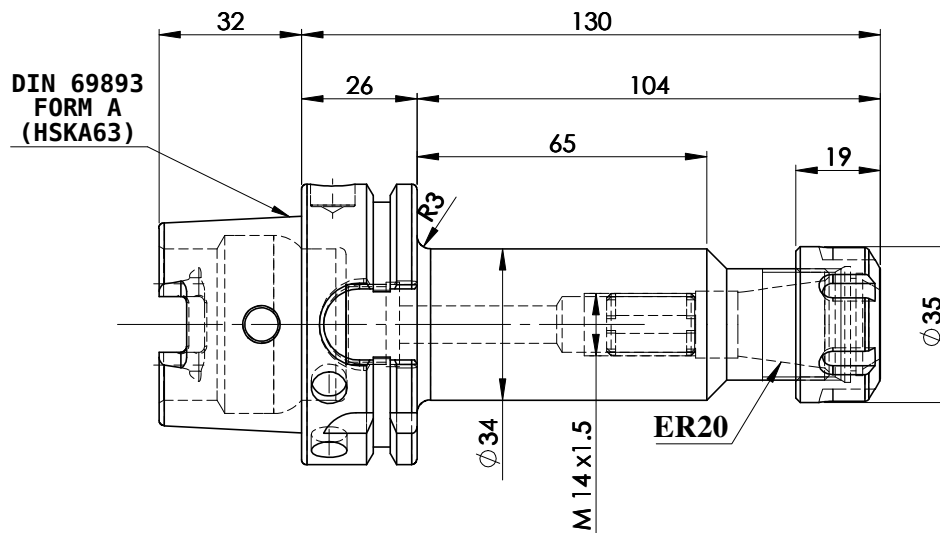
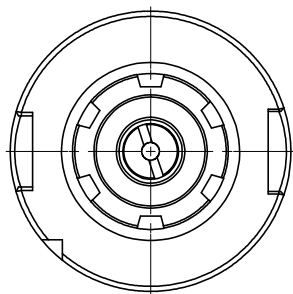
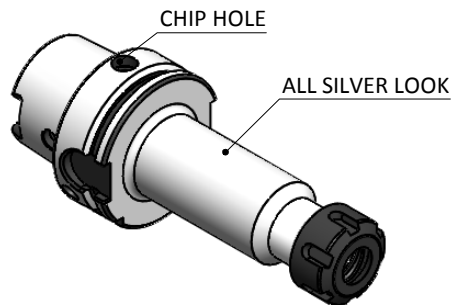


All Dimensions are in MM

Rev.No.	Ch.Let	Alterations	Date	Sign.	Appd.



LABEL :

**2002269.0405
 SPANNZANGENAUFNAHME
 ER COLLET CHUCK
 DIN69893 HSK63A
 ER 20 x 130mm
 G2,5 / 25.000 U/MIN**

**MARKING : DIN 69893 A HSK63A CCH ER20 H130
 G2.5 25000 U/MIN**

NOTE:

WEIGHT : 1.2 Kg

BALANCING 2.5G AT 25000 RPM

ITEM NO.	PART NUMBER	DESCRIPTION	QTY.
1	FWA063H-ERS20130	HSKA63CCHER20130WW	1
2	NUTER20	COLLET NUT	1
3	FTSCWM14X1.5	STOPPER SCREW	1

	μ m	0.012	0.025	0.05	0.1	0.2	0.4	0.8	1.6	3.2	6.3	12.5	25	50
GRADES		N1	N2	N3	N4	N5	N6	N7	N8	N9	N10	N11	N12	
SYMBOLS		▽▽▽			▽▽▽			▽▽			▽		~	
TOLERANCE FREE DIMENSIONS TOLERANCE		MATERIALS: 16MnCr5		2022	NAME	DATE	2002269.0405							
Dimns.	Dia	Length		DRAWN	SVR	16/06								
0.5 to 3	± 0.05	± 0.10		CHECKED	RVL	16/06								
3 to 6	± 0.10	± 0.15		APPROVED										
6 to 30	± 0.15	± 0.20		SCALE : NTS	QTY. :		PART NAME:		DRAWING No.				REV.	
30 to 120	± 0.20	± 0.25		HSKA63CCHER20130WW		FWA063H-ERS20130				00				
120 to 500	± 0.30	± 0.50												