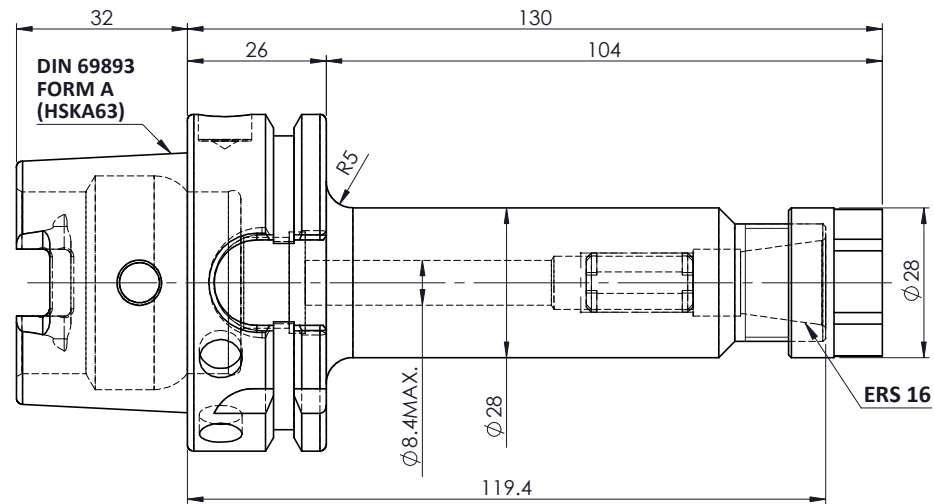
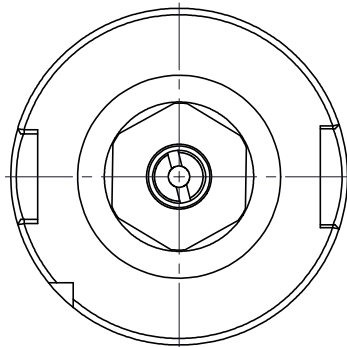


All Dimensions are in MM

Rev.No.	Ch.Let	Alterations	Date	Sign.	Appd.

For Customer Approval



LABEL :

**2002269.0305
 SPANZANGENAUFNAHME
 ER COLLET CHUCK HOLDER
 DIN69893 HSK63A
 ER 16 x 130mm
 G2,5 / 25000 U/MIN**

**MARKING : DIN 69893 A HSK63A CCH ER16 H130
 G2.5 25000 U/MIN**

Notes	
Balancing Value	G2.5@25000RPM
Approx Weight	1.0Kg

μ m	0.012	0.025	0.05	0.1	0.2	0.4	0.8	1.6	3.2	6.3	12.5	25	50
GRADES	N1	N2	N3	N4	N5	N6	N7	N8	N9	N10	N11	N12	
SYMBOLS	▽▽▽	▽▽	▽	▽	▽	▽	▽	▽	▽	▽	▽	▽	~
TOLERANCE FREE DIMENSIONS TOLERANCE	Dimns.		Dia	Length	MATERIALS:		2024	NAME	DATE	2002269.0305			
0.5 to 3	± 0.05	± 0.10	16MnCr5		DRAWN	SVR	19/07						
3 to 6	± 0.10	± 0.15	DRAWN		RVL	19/07							
6 to 30	± 0.15	± 0.20	CHECKED		APPROVED								
30 to 120	± 0.20	± 0.25	120 to 500		± 0.30	± 0.50	PART NAME:		DRAWING No.		REV.		
HSKA63CCHER16130WW							FWA063H-ERS16130		00				

ITEM NO.	PART NUMBER	DESCRIPTION	QTY.
3	SCW7/16-20UNF	STOPPER SCREW	1
2	NUTER16	COLLET NUT	1
1	FWA063H-ERS16130	HSKA63CCHER16130WW	1