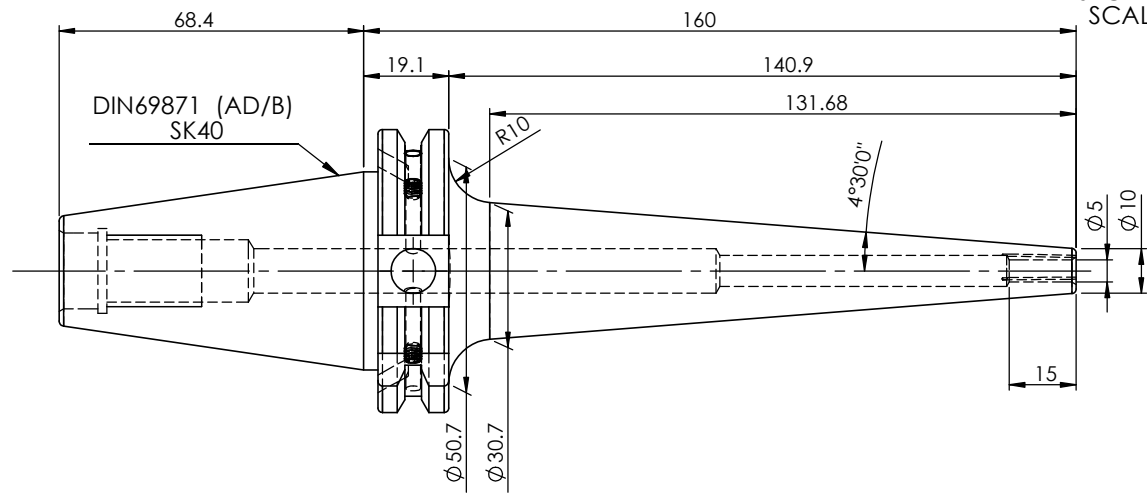
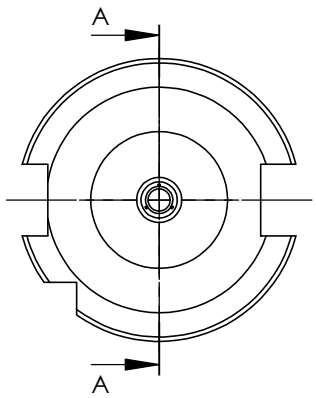
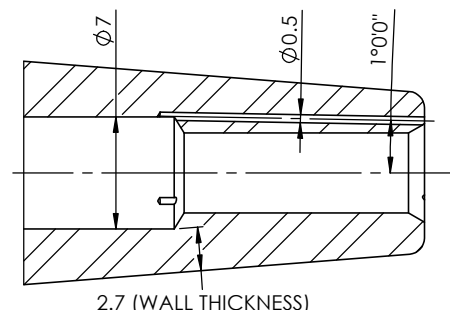
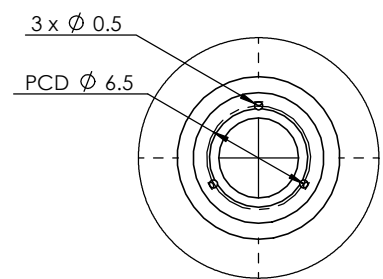
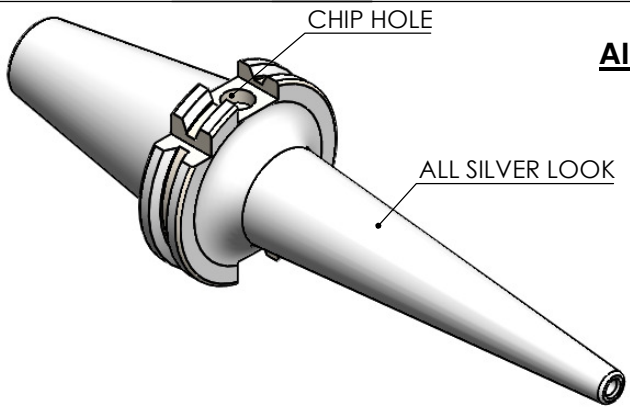


Rev.No.	Ch.Let	Alterations	Date	Sign.	Appd.

All Dimensions are in MM



LABEL :

2002266.0502
SCHRUMPFUTTER MIT KK
SHRINK FIT HOLDER COOLANT CHANNEL
ISO 7388-1 (DIN69871) SK40 AD/AF (AD+B)
SR4 05mm X 160mm
G2,5/25000 U/MIN

MARKING : ISO 7388-1 (DIN69871) SK40 AD/AF (AD+B) SFHC05H160
G2,5/25000 U/MIN

NOTE: WITHOUT BALANCING SCREW HOLES

NOTE :

BALANCING 2.5G@ 25000 RPM

Weight : 1.2 Kg

μ m	0.012	0.025	0.05	0.1	0.2	0.4	0.8	1.6	3.2	6.3	12.5	25	50
GRADES	N1	N2	N3	N4	N5	N6	N7	N8	N9	N10	N11	N12	
SYMBOLS	▽▽▽			▽▽			▽			~			
TOLERANCE	MATERIALS:			2022	NAME	DATE		2002266.0502					
FREE DIMENSIONS	HDS			DRAWN	SVR	29/01							
TOLERANCE	CHECKED			RVL	29/01								
	APPROVED			SCALE : NTS QTY. :									
Dimns.	Dia	Length	PART NAME:			DRAWING No.		REV.					
0.5 to 3	± 0.05	± 0.10	SK40SFK05160FWW			F1S409H-SFK05160		00					
3 to 6	± 0.10	± 0.15											
6 to 30	± 0.15	± 0.20											
30 to 120	± 0.20	± 0.25											
120 to 500	± 0.30	± 0.50											

ITEM NO.	PART NUMBER	DESCRIPTION	QTY.
1	F1S409H-SFK05160	SK40SFK05160FWW	1
2	GS-M4X4	GRUB SCREW	2