

Operator name and signature: Rolf Ugilt *Rolf Ugilt*

Output:	6270 lm
Peak:	837 cd
Lux @50cm:	3347 Lux
Power:	57,7 W
Power Factor / DF ϕ 1:	0,9
Standby power	0,0 W

Light efficacy:

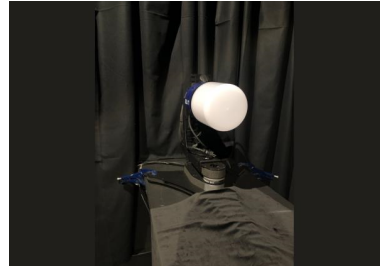
109 Lumen/Watt

Light quality:

CRI: 87,1

Color temperature:

7326 K



According to regulation (EU) 2019/2015

Directionality:	Non-Directional
Useful Lumen:	6270 lm
Energy Class:	F
η TM - Efficacy	109 lm/W

Product name:

AREA LITE CO

Item number:

03.5637

Date and time:

22-04-2021 14:08:05

Description:

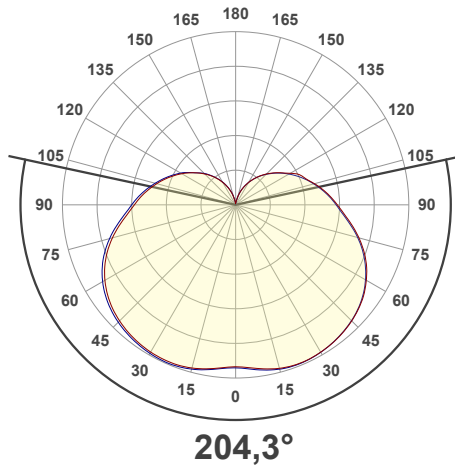
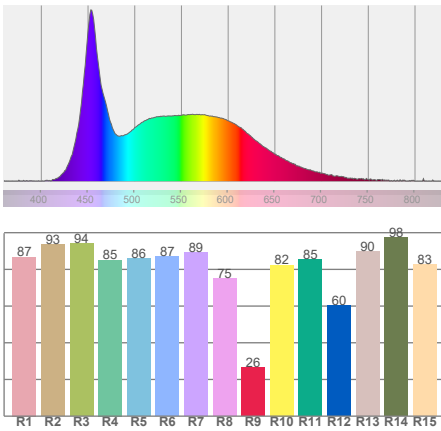
Standby Power [W]: 0

Sensor distance: 350 cm

Warmup: <2% in 15 minutes

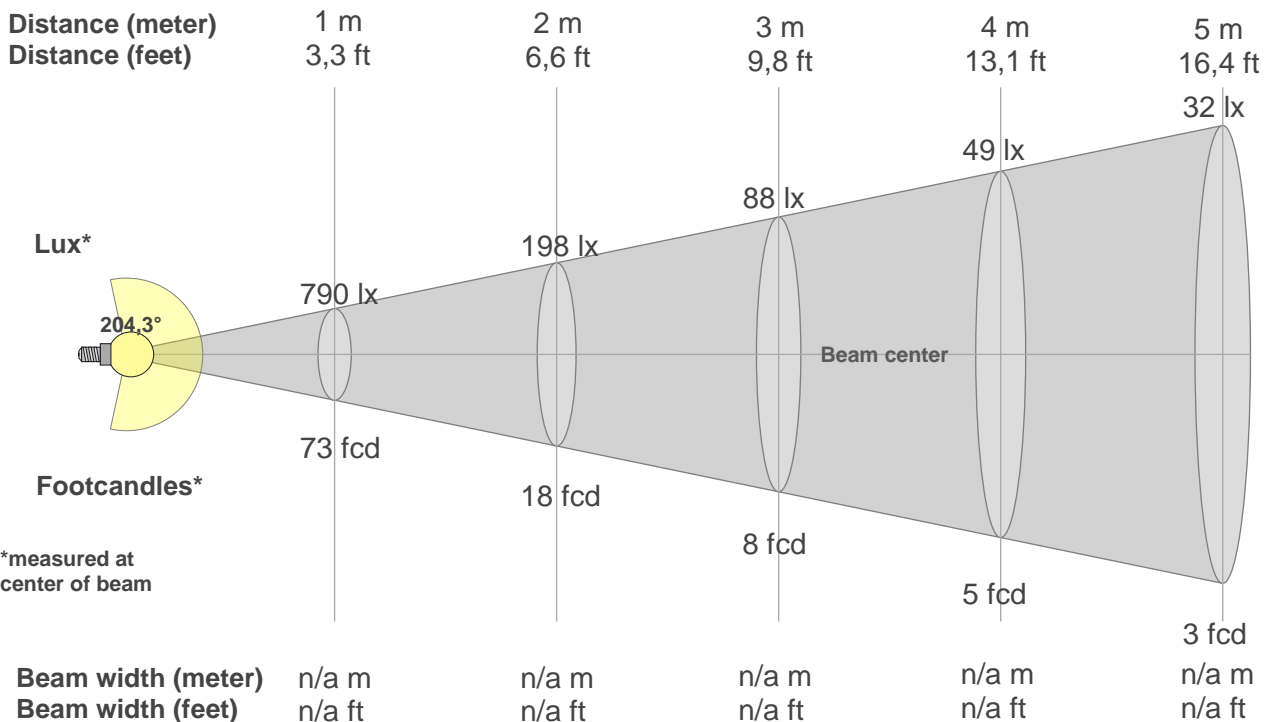
Power: 230VAC

Spectra



BEAM DETAILS

Beam distance: 56,2 meters



*measured at center of beam

Beam intensities from 1-20m

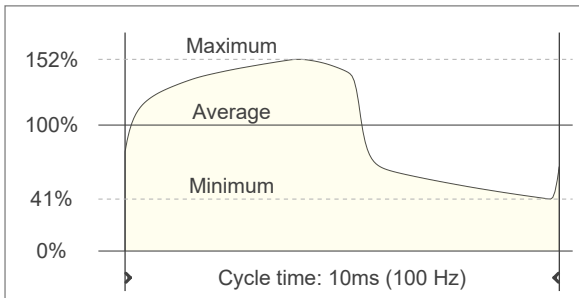
1m	2m	3m	4m	5m	6m	7m	8m	9m	10m	11m	12m	13m	14m	15m	16m	17m	18m	19m	20m
3,3ft	6,6ft	9,8ft	13,1ft	16,4ft	19,7ft	23ft	26,2ft	29,5ft	32,8ft	36,1ft	39,4ft	42,7ft	45,9ft	49,2ft	52,5ft	55,8ft	59,1ft	62,3ft	65,6ft
790lx	198lx	88lx	49lx	32lx	22lx	16lx	12lx	10lx	8lx	7lx	5lx	5lx	4lx	4lx	3lx	3lx	2lx	2lx	2lx
73,4fcd	18,4fcd	8,2fcd	4,6fcd	2,9fcd	2fcd	1,5fcd	1,1fcd	0,9fcd	0,7fcd	0,6fcd	0,5fcd	0,4fcd	0,4fcd	0,3fcd	0,3fcd	0,3fcd	0,2fcd	0,2fcd	0,2fcd

FLICKER DETAILS

Flicker curve (complete sampled flicker signal)



Flicker frame (frame of one flicker period)



Flicker frequency:	100 Hz
Flicker index:	0,21
Flicker percentage:	100 %
SVM: (Visual flicker)	2,3
Pst LM:	0,1
SDCM	8,4
Rated Color Temperature	6500 K
Duv	0,0019

WARMUP DETAILS according to EN 13032-1

